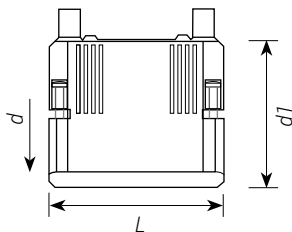


Fittings for Gas Connection

Jain MDPE/HDPE Gas Pipes provide the safest, most cost effective solution for Piped Gas Distribution systems. The gas pipes are joined using Electro Fusion fittings. Jain MDPE/ HDPE Gas pipes and fittings are used for conveyance of domestic (City Gas Distribution system) &

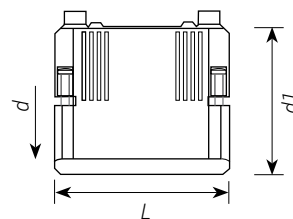
industrial gas. The MDPE/HDPE Gas piping system provides leakproof, homogeneous, corrosion proof piping system for conveyance of gas. Across India Jain MDPE/HDPE gas pipes are being used by all CGD & CBM companies.



Coupler with integral pipe fixation

- PE 100 SDR 11 (ISO S5)
- 10 bar Gas
- 4 mm pin connectors
- Limited path fusion indicators
- Removable centre stop

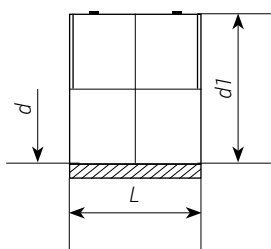
d [mm]	Code	Weight [kg]	d1	L
20	753 911 606	0.053	31	70
25	753 911 607	0.050	36	70
32	753 911 608	0.071	44	72
40	753 911 609	0.095	54	80
50	753 911 610	0.131	66	88
63	753 911 611	0.194	81	96



Coupler

- PE 100 SDR 17 (ISO S8)
- 5 bar Gas
- 4 mm pin connectors
- Limited path fusion indicators
- d160 with removable centre stop

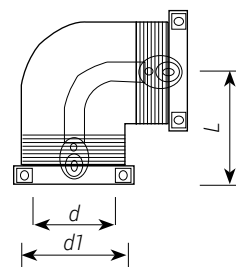
d [mm]	Code	Weight [kg]	d1	L
160	753 911 817	1.017	186	180
180	753 911 818	1.434	213	192
200	753 911 819	1.726	233	206
225	753 911 820	2.545	261	225
250	753 911 821	4.616	304	248
280	753 911 822	5.606	304	252
315	753 911 823	8.186	382	267



Coupler

- PE 100 SDR 17 (ISO S8)
- 5 bar Gas
- 4 mm pin connectors
- Limited path fusion indicators
- With active reinforcement

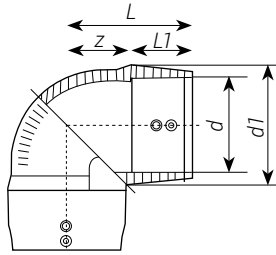
d [mm]	Code	Weight [kg]	d1	L
355	753 911 804	9.522	416	291
400	753 911 805	18.000	467	295
450	753 911 806	16.000	526	327
500	753 911 807	22.000	584	358
560	753 911 808	34.000	647	396
630	753 911 809	35.000	727	440
710	753 911 810	55.600	820	463
800	753 911 811	73.000	922	484



Elbow 90° with integral pipe fixation

- PE 100 SDR 11 (ISO S5)
- 10 bar Gas
- 4 mm pin connectors
- Limited path fusion indicators

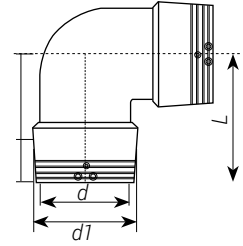
d [mm]	Code	Weight [kg]	d1 [mm]	L [mm]	L1 [mm]	z [mm]
20	753 101 606	0.080	35	54	34	20
25	753 101 607	0.068	35	54	34	20
32	753 101 608	0.098	44	53	36	17
40	753 101 609	0.141	54	62	39	23
50	753 101 610	0.200	66	71	43	28
63	753 101 611	0.318	81	81	48	32



Elbow 90°

- PE 100 SDR 11 (ISO S5)
- 10 bar Gas
- 4 mm pin connectors
- Limited path fusion indicators

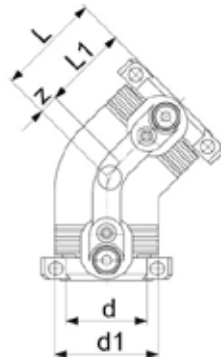
d [mm]	Code	Weight [kg]	d1 [mm]	L [mm]	L1 [mm]	z [mm]
75	753 101 612	0.415	97	94	54	40
90	753 101 813	0.828	115	122	62	60
110	753 101 814	1.224	140	147	72	76
125	753 101 815	1.742	160	155	77	68
160	753 101 816	3.830	196	191	92	86
180	753 101 817	5.410	219	210	95	100



Elbow 90°

- PE 100 SDR 11 (ISO S5)
- 10 bar Gas
- 4 mm pin connectors
- Limited path fusion indicators
- Two separate fusion zones

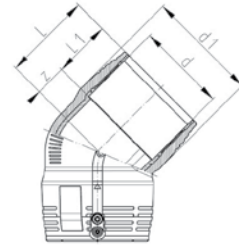
d [mm]	Code	Weight [kg]	d1 [mm]	L [mm]	L1 [mm]	z [mm]
200	753 101 819	9.320	250	298	104	194
225	753 101 820	13.220	280	318	112	206
250	753 101 821	16.600	310	347	123	224



**Elbow 45°
with Integral pipe fixation**

- PE 100 SDR 11 (ISO S5)
- 10 bar Gas
- 4 mm pin connectors
- Limited path fusion indicators

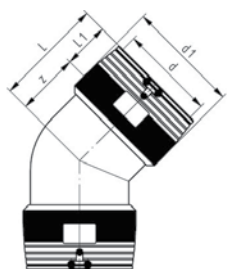
d [mm]	Code	Weight [kg]	d1 [mm]	L [mm]	L1 [mm]	z [mm]
32	753 151 608	0.075	44	44	36	8
40	753 151 609	0.106	54	50	39	11
50	753 151 610	0.171	66	56	43	13
63	753 151 611	0.252	81	63	48	15



Elbow 45°

- PE 100 SDR 11 (ISO S5)
- 10 bar Gas
- 4 mm pin connectors
- Limited path fusion indicators

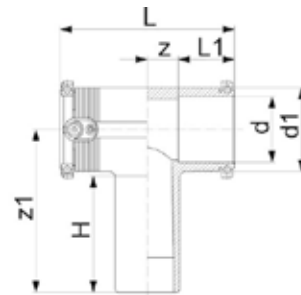
d [mm]	Code	Weight [kg]	d1 [mm]	L [mm]	L1 [mm]	z [mm]
75	753 151 612	0.332	97	71	54	17
90	753 151 613	0.583	115	91	62	29
110	753 151 614	0.985	140	112	72	40
125	753 151 615	1.438	160	119	78	49
160	753 151 617	3.055	196	135	92	42
180	753 151 618	4.037	217	144	95	47



Elbow 45°

- PE 100 SDR 11 (ISO S5)
- 10 bar Gas
- 4 mm pin connectors
- Limited path fusion indicators
- Two separate fusion zones

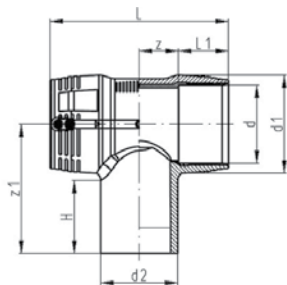
d [mm]	Code	Weight [kg]	d1 [mm]	L [mm]	L1 [mm]	z [mm]
200	753 151 819	7.566	250	232	104	128
225	753 151 820	11.300	280	247	112	135
250	753 151 821	13.500	310	275	123	152



Tee 90° equal with Integral Pipe Fixation

- PE 100 SDR 11 (ISO S5)
- 10 bar Gas
- 4 mm pin connectors
- Limited path fusion indicators

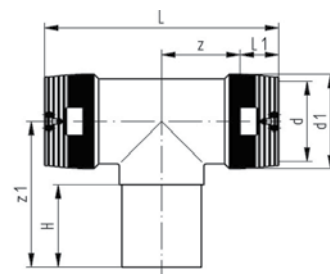
d [mm]	Code	Weight [kg]	d1 [mm]	L [mm]	L1 [mm]	z [mm]	z1 [mm]	H [mm]
20	753 211 606	0.085	35	88	32	11	92	67
25	753 211 607	0.075	35	90	32	11	92	70
32	753 211 608	0.118	44	102	34	15	100	74
40	753 211 609	0.175	54	119	39	21	114	82
50	753 211 610	0.252	66	135	42	24	126	90
63	753 211 611	0.407	81	151	46	28	150	102



Tee 90° equal

- PE 100 SDR 11 (ISO S5)
- 10 bar Gas
- 4 mm pin connectors
- Limited path fusion indicators

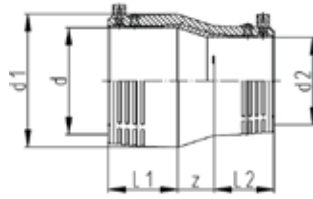
d [mm]	Code	Weight [kg]	d1 [mm]	L [mm]	L1 [mm]	z [mm]	z1 [mm]	H [mm]
75	753 211 612	0.569	97	178	54	35	143	87
90	753 201 813	0.891	115	205	62	41	161	94
110	753 201 814	1.576	140	255	72	56	184	104
125	753 201 815	2.212	161	276	78	60	207	113
160	753 201 817	4.386	196	325	92	71	206	103
180	753 201 818	6.796	225	344	90	82	250	110



Tee 90° equal with Integral Pipe Fixation

- PE 100 SDR 11 (ISO S5)
- 10 bar Gas
- 4 mm pin connectors
- Limited path fusion indicators
- Two separate fusion zones

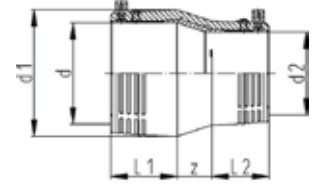
d [mm]	Code	Weight [kg]	d1 [mm]	L [mm]	L1 [mm]	z [mm]	z1 [mm]	H [mm]
200	753 201 819	10.800	250	590	104	191	250	117
225	753 201 820	15.900	280	636	112	206	270	122
250	753 201 821	18.900	310	685	123	220	288	127



**Reducer
with integral Pipe Fixation**

- PE 100 SDR 11 (ISO S5)
- 10 bar Gas
- 4 mm pin connectors
- Limited path fusion indicators

d [mm]	d2 [mm]	Code	Weight [kg]	d1 [mm]	L [mm]	L1 [mm]	L2 [mm]	z [mm]
25	20	753 901 639	0.051	35	74	34	34	6
32	20	753 901 640	0.056	44	79	33	36	10
32	25	753 901 641	0.062	44	79	33	36	10
40	20	753 901 644	0.069	54	88	33	39	15
40	25	753 901 645	0.084	54	88	33	39	15
40	32	753 901 646	0.095	54	88	33	39	13
50	32	753 901 651	0.124	66	96	35	43	18
50	40	753 901 652	0.119	66	96	39	43	14
63	32	753 901 656	0.158	81	105	35	48	23
63	40	753 901 657	0.176	81	105	39	48	19
63	50	753 901 658	0.176	81	105	43	48	15

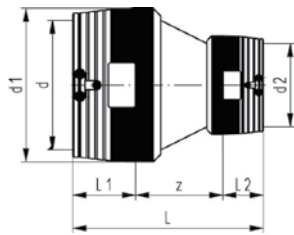


Reducer

- PE 100 SDR 11 (ISO S5)
- 10 bar Gas
- 4 mm pin connectors
- Limited path fusion indicators

d [mm]	d2 [mm]	Code	Weight [kg]	d1 [mm]	L [mm]	L1 [mm]	L2 [mm]	z [mm]
90	63	753 901 831	0.385	113	146	63	47	36
110	63	753 901 832	0.644	140	184	71	58	55
110	90	753 901 833	0.700	138	173	73	63	38
125	90	753 901 836	0.891	152	180	79	61	40
160	90	753 901 839	1.600	202	227	90	72	65
160	110	753 901 864	1.783	202	226	90	71	65
180	125	753 901 865	2.444	225	254	96	78	80

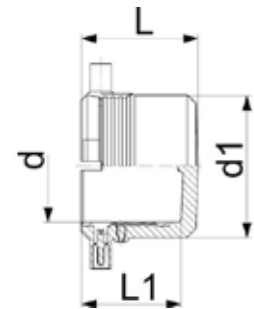
Remark: • Available in Q 3/4 2015
• Available in Q 3/4 2015



Reducer

- PE 100 SDR 11 (ISO S5)
- 10 bar Gas
- 4 mm pin connectors
- Limited path fusion indicators
- Two separate fusion zones

d [mm]	d2 [mm]	Code	Weight [kg]	d1 [mm]	L [mm]	L1 [mm]	L2 [mm]	z [mm]
200	160	753 901 837	5.098	250	365	104	90	171
225	160	753 901 838	6.000	280	385	112	90	183
250	160	753 901 840	7.860	310	400	123	90	187
250	200	753 901 841	8.480	310	427	123	104	200



**End Cap
with integral Pipe Fixation**

- PE 100 SDR 11 (ISO S5)
- 10 bar Gas
- 4 mm pin connectors
- Limited path fusion indicators

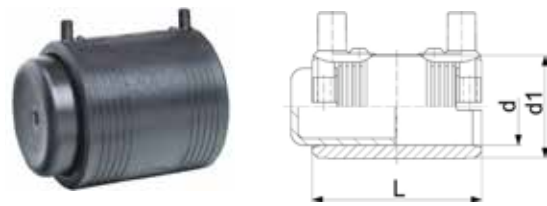
d [mm]	Code	Weight [kg]	d1 [mm]	L [mm]	L1 [mm]
20	753 961 606	0.041	35	52	44
25	753 961 607	0.046	35	52	44
32	753 961 608	0.058	44	52	44
40	753 961 609	0.064	54	56	47
50	753 961 610	0.154	66	60	49
63	753 961 611	0.142	81	66	54



End Cap

- PE 100 SDR 11 (ISO S5)
- 10 bar Gas
- 4 mm pin connectors
- Limited path fusion indicators

d [mm]	Code	Weight [kg]	d1 [mm]	L [mm]	L1 [mm]
160	753 961 617	1.782	200	143	90
200	753 961 619	3.585	250	162	104
225	753 961 620	4.500	280	170	112
250	753 961 621	6.300	310	185	123



End Cap (Kit)

- PE 100 SDR 11 (ISO S5)
- 10 bar Gas
- 4 mm pin connectors
- Limited path fusion indicators
- Supplied as kit including ELGEF Plus Coupler

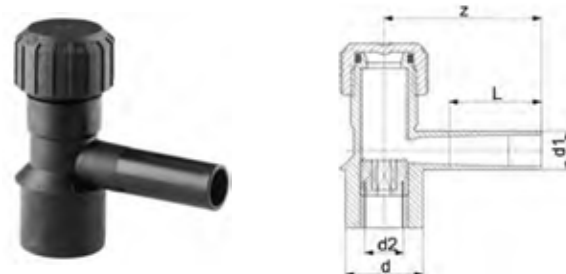
d [mm]	Code	Weight [kg]	d1 [mm]	L [mm]
75	753 961 712	0.446	96	110
90	753 961 713	0.663	113	125
110	753 961 714	1.090	133	145
125	753 961 715	1.345	155	158
140	753 961 716	2.250	175	170
160	753 961 717	2.382	197	180
180	753 961 718	3.098	220	194
200	753 961 719	4.180	245	208
225	753 961 720	5.852	296	224



Electrofusion saddle

- PE 100 SDR 11 (ISO S5)
- 10 bar Gas
- Complete with lower part
- *Complete with moulded-on lower part
- 4 mm pin connectors
- Limited path fusion indicators
- ** Delivery without lower part for assembling as Top Load with tool no. 799.350.477 Not suitable for all tapping-tees, tapping-valves and spigots with cutter of the modular systems, SDR compatibility according to individual parts

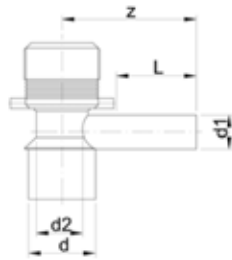
	d [mm]	d1 [mm]	Code	Weight [kg]	L [mm]
	63	63	193 131 037	0.325	165
	75	63	193 131 047	0.455	165
	90	63	193 131 057	0.415	165
	110	63	193 131 067	0.458	165
*	110	63	193 133 067	0.240	182
	125	63	193 131 077	0.502	165
	140	63	193 131 087	0.523	165
	160	63	193 131 097	0.493	165
*	160	63	193 133 097	0.543	182
	180	63	193 131 107	0.600	165
	200	63	193 131 117	0.634	165
	225	63	193 131 127	0.618	165
	250	63	193 131 137	0.627	165
	280	63	193 131 147	0.359	165
	315-355	63	193 131 157	0.373	165
	400	63	193 131 177	0.356	165



Tapping tee

- PE 100 SDR 11 (ISO S5)
- 10 bar Gas
- With integrated cutter to tap live mains under pressure
- Long fusion outlet
- O-ring-sealed screw cap
- For ELGEF Plus Branch Saddle d63-225mm, pipe SDR 11
- For ELGEF Plus Branch Saddle d90-315mm, pipe SDR 17
- *For ELGEF Plus Branch Saddle d250-315mm, pipe SDR 11 and d250-400mm, pipe SDR 17
- *For ELGEF Plus Branch Saddle d110-225mm, pipe SDR11 and d110-315mm, pipe SDR17

	d [mm]	d1 [mm]	Code	Weight [kg]	d2 [mm]	L [mm]	z [mm]	SW [mm]
	63	20	193 280 358	0.380	32	69	130	17
	63	25	193 280 359	0.375	32	70	130	17
	63	32	193 280 184	0.377	32	76	130	17
	63	40	193 280 360	0.396	32	81	137	17
	63	63	193 280 185	1.099	32	100	160	17
*	63	63	193 280 711	1.120	35	100	160	17
**	63	63	193 280 290	1.086	41	100	160	17



Tapping tee with electrofusion cap

- PE 100 SDR 11 (ISO S5)
- 10 bar Gas
- With integrated cutter to tap live mains under pressure
- For ELGEF Plus Branch Saddle d63-225mm, pipe SDR 11
- For ELGEF Plus Branch Saddle d90-315mm, pipe SDR 17
- Long fusion outlet

d [mm]	d1 [mm]	Code	Weight [kg]	d2 [mm]	L [mm]	z [mm]	SW [mm]
63	32	193 280 300	0.441	32	76	130	17
63	63	193 280 301	1.209	32	100	160	17



Electrofusion Cap

- PE 100 SDR 11 (ISO S5)
- 10 bar Gas
- For ELGEF Plus Tapping Saddles
- 193 280 153 is suitable for all Tapping Tees with outlets d20, d25, d32, d40mm
- 193 280 154 is suitable for all Tapping Tees with outlets d63 mm outlet.

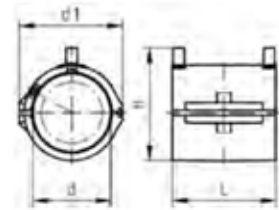
d [mm]	Code	Weight [kg]
55	193 280 153	0.126
68	193 280 154	0.200



Repair saddle

- PE 100 SDR 11 (ISO S5)
- 10 bar Gas
- Complete with lower part
- 4 mm pin connectors
- Limited path fusion indicators
- Supplied as kit including Spigot Cap (753.961.011)
- *Delivery without lower part for assembling as Top Load with tool no. 799.350.477

	d [mm]	d1 [mm]	Code	Weight [kg]	L [mm]
	63	63	193 130 037	0.417	165
	75	63	193 130 047	0.574	165
	90	63	193 130 057	0.513	165
	110	63	193 130 067	0.565	165
	125	63	193 130 077	0.622	165
	140	63	193 130 087	0.660	165
	160	63	193 130 097	0.589	165
	180	63	193 130 107	0.733	165
	200	63	193 130 117	0.731	165
	225	63	193 130 127	0.708	165
	250	63	193 130 137	0.640	165
*	280	63	193 130 147	0.450	165
*	315-355	63	193 130 157	0.443	165
*	400	63	193 130 177	0.450	165



Reinforcing Saddle

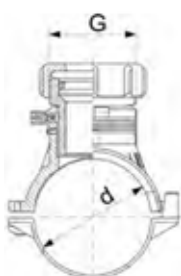
- PE 100 SDR 11 (ISO S5)
- 10 bar Gas
- Fusion voltage 24 volt
- 4 mm pin connectors
- For use as a repair saddle with PE repair plug (Code 799.199.088 and 799.199.089 and as reinforcing saddle with an fusion area which extends the whole circumference of the pipe.
- Use Spring clamp (Code 799.150.090) for installation

d [mm]	Code	Weight [kg]	d1 [mm]	L [mm]	H [mm]
40	193 127 017	0.135	104	105	108
50	193 127 027	0.200	80	105	85
63	193 127 037	0.255	132	120	153
75	193 127 047	0.430	162	130	122
90	193 127 057	0.547	104	130	147
110	193 127 067	0.528	120	120	191
125	193 127 077	0.757	158	130	184
160	193 127 097	0.961	192	130	218
180	193 127 107	1.095	214	130	239
200	193 127 117	1.145	236	130	260
225	193 127 127	1.399	262	140	286



Stop-off Saddle with PE-adaptor
Maximum passage 50 mm

- PE 100 SDR 11 (ISO S5)
- 10 bar Gas
- Complete with lower part
- Supplied as Kit with PE-Stop-Off Adaptor
- PE Stop-Off insert
- 4 mm pin connectors
- Limited path fusion indicators
- *Delivery without lower part for assembling as Top Load with tool no. 799.350.477; angle adaptor (799.350.340) for fusion cable required



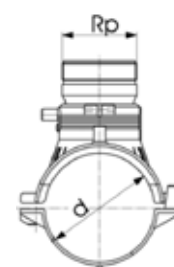
L = length

	d [mm]	G ["]	Code	Weight [kg]	L [mm]
	63	2¾	193 149 237	0.606	165
	75	2¾	193 149 247	0.765	165
	90	2¾	193 149 257	0.696	165
	110	2¾	193 149 267	0.732	165
	125	2¾	193 149 277	0.785	165
	140	2¾	193 149 287	0.820	165
	160	2¾	193 149 297	0.772	165
	180	2¾	193 149 307	0.920	165
	200	2¾	193 149 317	0.913	165
	225	2¾	193 149 327	0.910	165
	250	2¾	193 149 337	0.936	165
*	280	2¾	193 149 347	0.920	165
*	315-355	2¾	193 149 357	0.660	165
*	400	2¾	193 149 377	0.920	165



Stop-off Saddle (kit)
Maximum passage 56.5 mm

- PE 100 SDR 11 (ISO S5)
- 10 bar Gas
- Complete with lower part
- Stop-Off insert (CW617N) and plug
- 4 mm pin connectors
- Limited path fusion indicators
- Stop-Off insert with outside thread Rp 2 1/2" and internal thread Rp 2" suited for common tapping devices permitting "gas-tight" installation
- *Delivery without lower part for assembling as Top Load with tool no. 799.350.475; angle adaptor (799.350.340) for fusion cable required
- For main dimension d63 and d75mm we recommend a maximum cutting diameter of d = 39mm



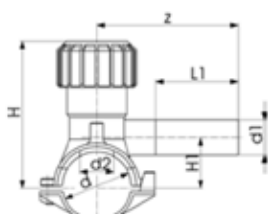
L = length

	d [mm]	G ["]	Code	Weight [kg]	L [mm]
	63	2½	193 149 437	1.770	165
	75	2½	193 149 447	1.900	165
	90	2½	193 149 457	1.775	165
	110	2½	193 149 467	1.788	165
	125	2½	193 149 477	1.923	165
	140	2½	193 149 487	1.945	165
	160	2½	193 149 497	1.861	165
	180	2½	193 149 507	2.017	165
	200	2½	193 149 517	2.092	165
	225	2½	193 149 527	2.031	165
	250	2½	193 149 537	2.058	165
*	280	2½	193 149 547	1.550	165
*	315-355	2½	193 149 557	1.770	165
*	400	2½	193 149 577	1.550	165



Tapping Saddle Monobloc version

- PE 100 SDR 11 (ISO S5)
- 10 bar Gas
- With integrated cutter to tap live mains under pressure
- Complete with lower part
- 4 mm pin connectors
- Limited path fusion indicators
- Long fusion outlet
- O-ring-sealed screw cap



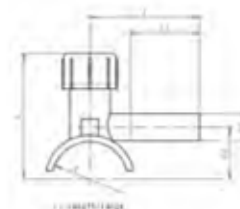
L = length

d [mm]	d1 [mm]	Code	Weight [kg]	d2 [mm]	H [mm]	H1 [mm]	L [mm]	L1 [mm]	z [mm]
40	20	193 131 412	0.225	16	99	33	103	70	102
40	25	193 131 413	0.226	16	99	33	103	70	102
40	32	193 131 414	0.225	16	99	33	103	70	120
50	20	193 131 422	0.214	16	104	38	103	70	102
50	25	193 131 423	0.212	16	104	38	103	70	102
50	32	193 131 424	0.228	16	104	38	103	70	120
63	20	193 131 432	0.428	25	134	44	126	70	115
63	25	193 131 433	0.431	25	134	44	126	70	115
63	32	193 131 434	0.425	25	134	44	126	70	130



Tapping Saddle Monobloc

- PE 100 SDR 11 (ISO S5)
- 10 bar Gas
- With integrated cutter to tap live mains under pressure
- Delivery without lower part for assembling as Topload with tool no. 799 301 558
- 4 mm pin connectors
- Fusion indicator
- Long fusion outlet
- O-ring-sealed screw cap

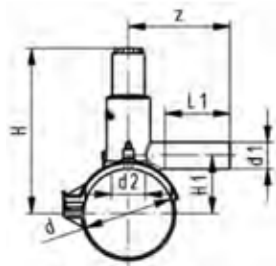


d [mm]	d1 [mm]	Code	Weight [kg]	d2 [mm]	H [mm]	H1 [mm]	L [mm]	L1 [mm]	z [mm]
32	20	193 281 459	0.156	12	83	29	101	65	90



**Tapping Saddle
Monobloc version**

- PE 100 SDR 11 (ISO S5)
- 10 bar Gas
- With integrated cutter to tap live mains under pressure
- Complete with moulded-on lower part
- 4 mm pin connectors
- Limited path fusion indicators
- Long fusion doutlet
- O-ring-sealed screw cap
- *Compatible with GASSTOP type GS

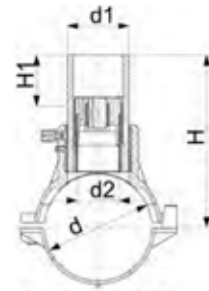


L = length



Spigot saddle with cutter

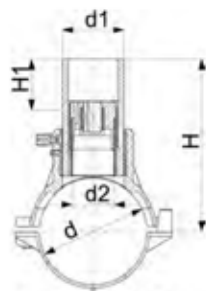
- PE 100 SDR 11 (ISO S5)
- 10 bar Gas
- Complete with lower part
- 4 mm pin connectors
- Limited path fusion indicators
- d315 - 400 mm: application is limited on pipes d355 and d400 mm. Not suitable for pipes if larger wall thickness than SDR 17 pipes.
- **Delivery without lower part for assembling as Top Load with tool no. 799.350.477; angle adaptor (799.350.340) for fusion cable required



L = length

	d [mm]	d1 [mm]	Code	Weight [kg]	d2 [mm]	H [mm]	H1 [mm]	L [mm]	L1 [mm]	z [mm]
*	63	20	193 131 932	0.368	25	146	44	144	76	110
	63	25	193 131 933	0.393	25	146	44	144	76	110
*	63	32	193 131 934	0.376	25	146	44	144	76	110
*	90	20	193 131 952	0.494	32	198	61	162	76	115
	90	25	193 131 953	0.503	32	198	61	162	76	115
*	90	32	193 131 954	0.505	32	198	61	162	76	115
	90	63	193 131 957	0.667	32	198	61	162	76	115

	d [mm]	d1 [mm]	Code	Weight [kg]	d2 [mm]	H [mm]	H1 [mm]	L [mm]	SW [mm]	SDR pipe
	63	32	193 131 234	0.469	19	145	50	165	13	9-11
	63	63	193 131 237	1.036	32	152	50	165	17	9-11
	75	32	193 131 244	0.618	19	151	50	165	13	9-11
	75	63	193 131 247	1.166	32	158	50	165	17	9-11
	90	32	193 131 254	0.543	19	158	50	165	13	9-11
	90	63	193 131 257	1.128	32	165	50	165	17	9-11
	110	32	193 131 264	0.607	19	168	50	165	13	9-11
	110	63	193 131 267	1.195	32	175	50	165	17	9-11
	125	32	193 131 274	0.659	19	176	50	165	13	9-11
	125	63	193 131 277	1.224	32	183	50	165	17	9-11
	140	32	193 131 284	0.679	19	183	50	165	13	9-11
	140	63	193 131 287	1.224	32	190	50	165	17	9-11
	160	32	193 131 294	0.652	19	193	50	165	13	9-11
	160	63	193 131 297	1.186	32	200	50	165	17	9-11
	180	32	193 131 304	0.777	19	203	50	165	13	9 - 26
	180	63	193 131 307	1.316	32	210	50	165	17	9 - 26
	200	32	193 131 314	0.854	19	213	50	165	13	9 - 26
	200	63	193 131 317	1.352	32	220	50	165	17	9 - 26
	225	32	193 131 324	0.856	19	226	50	165	13	11 - 26
	225	63	193 131 327	1.324	32	233	50	165	17	11 - 26
	250	32	193 131 334	0.787	19	238	50	165	13	11 - 26
	250	63	193 131 337	1.348	32	245	50	165	17	11 - 26
*	280	63	193 131 347	0.830	35	245	50	165	17	11 - 26
*	315-355	63	193 131 357	1.094	35	245	50	165	17	17 - 33
*	400	63	193 131 377	0.830	35	245	50	165	17	17 - 33

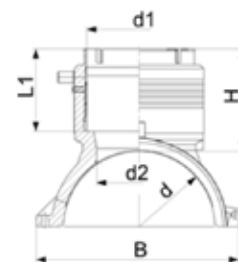


L = length

Spigot Saddle

- PE 100 SDR 11 (ISO S5)
- 10 bar Gas
- Complete with lower part
- 4 mm pin connectors
- Limited path fusion indicators
- d315 - 400 mm: application is limited on pipes d355 and d400 mm. Not suitable for pipes if larger wall thickness than SDR 17 pipes.
- **Delivery without lower part for assembling as Top Load with tool no. 799.350.477; angle adaptor (799.350.340) for fusion cable required

d [mm]	d1 [mm]	Code	Weight [kg]	d2 [mm]	H [mm]	H1 [mm]	L [mm]
63	32	193 131 234	0.434	19	145	50	165
63	63	193 131 237	0.630	32	152	50	165
75	32	193 131 244	0.634	19	151	50	165
75	63	193 131 247	0.536	32	158	50	165
90	32	193 131 254	0.508	19	158	50	165
90	63	193 131 257	0.573	32	165	50	165
110	32	193 131 264	0.590	19	168	50	165
110	63	193 131 267	0.600	32	175	50	165
125	32	193 131 274	0.594	19	176	50	165
125	63	193 131 277	0.660	32	183	50	165
140	32	193 131 284	0.638	19	183	50	165
140	63	193 131 287	0.594	32	190	50	165
160	32	193 131 294	0.600	19	193	50	165
160	63	193 131 297	0.658	32	200	50	165
180	32	193 131 304	0.742	19	203	50	165
180	63	193 131 307	0.771	32	210	50	165
200	32	193 131 314	0.766	19	213	50	165
200	63	193 131 317	0.762	32	220	50	165
225	32	193 131 324	0.730	19	226	50	165
225	63	193 131 327	0.782	32	233	50	165
250	32	193 131 334	0.741	19	238	50	165
250	63	193 131 337	0.792	32	245	50	165
*	280	63	193 131 347	0.400	35	245	165
*	315-355	63	193 131 357	0.503	35	245	165
*	400	63	193 131 377	0.400	35	245	165



Branch Saddle outlet 90-125 mm

- PE 100 SDR 11 (ISO S5)
- 10 bar Gas
- Branch Saddle complete, incl. lower part and 3 screws
- Additional fixing with snatch hinge
- Electrofusion outlet with integrated pipe fixation
- Protected wire without medium contact
- 4 mm pin connectors
- Limited path fusion indicators
- * Delivered without lower part. Pipe fixation with multiple use assembly tool no. 193.281.027

d [mm]	d1 [mm]	Code	Weight [kg]	H [mm]	L [mm]	L1 [mm]	B [mm]	d2 [mm]
110	90	193 135 009	1.124	101	220	82	164	65
110	110	193 135 010	1.224	107	220	88	164	65
125	90	193 135 019	1.134	101	220	82	179	65
125	110	193 135 020	1.290	107	220	88	179	65
*	140	90	193 135 029	0.982	101	81	195	65
*	140	110	193 135 030	1.087	107	87	195	65
160	90	193 135 039	1.449	102	240	82	215	65
160	110	193 135 040	1.582	108	240	88	215	86
160	125	193 135 041	1.782	129	240	99	215	86
180	90	193 135 049	1.672	102	260	82	237	65
180	110	193 135 050	1.765	108	260	88	237	86
180	125	193 135 051	2.015	129	260	99	237	86
200	90	193 135 059	1.803	102	260	82	253	65
200	110	193 135 060	1.963	108	260	88	253	86
200	125	193 135 061	2.128	129	260	99	253	86
225	90	193 135 069	2.006	102	260	82	287	65
225	110	193 135 070	2.400	108	260	88	287	86
225	125	193 135 071	2.312	129	260	99	287	86
250	90	193 135 079	2.145	102	260	82	312	65
250	110	193 135 080	2.258	108	260	88	312	86
250	125	193 135 081	2.500	129	260	99	312	86



Cross Connection Branch Saddle

- Enables the connection of two Branch Saddle as a cross
- Complete with screws, flat washers and nuts

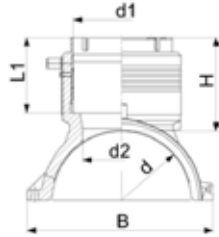
d [mm]	Code	Weight [kg]
110-160	193 280 880	0.268
180-250	193 280 881	0.282



Multiple use assembly tool branch saddle d1 40mm

- Only to be used with Branch Saddle d140mm
- Delivered as complete Kit including screws and belt

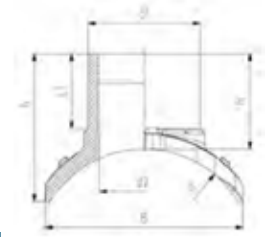
d [mm]	Code	Weight [kg]
140	193 281 027	0.724



Branch saddle topload outlet 90 - 125 mm

- PE 100 SDR 11 (ISO S5)
- 10 bar Gas
- Branch Saddle for assembling as Topload with tool 799.350.477; angle adaptors (799.350.340) for fusion cable required
- Electrofusion outlet with integrated pipe fixation
- Protected wire without medium contact
- 4 mm pin connectors
- Limited path fusion indicators

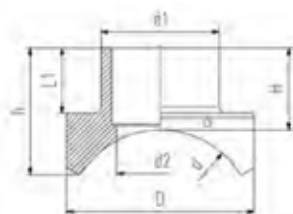
d [mm]	d1 [mm]	Code	Weight [kg]	H [mm]	L [mm]	L1 [mm]	B [mm]	d2 [mm]
280	90	193 135 289	1.242	102	260	82	243	65
280	110	193 135 290	1.295	108	260	88	243	86
280	125	193 135 291	1.530	129	260	99	243	86
315-355	90	193 135 309	1.214	102	260	82	249	65
315-355	110	193 135 310	1.297	108	260	88	249	86
315-355	125	193 135 311	1.530	129	260	99	249	86
400-450	90	193 135 329	1.022	102	260	82	256	65
400-450	110	193 135 330	1.116	108	260	88	256	86
400-450	125	193 135 331	1.369	129	260	99	256	86
500-630	90	193 135 159	1.086	102	260	82	263	65
500-630	110	193 135 160	1.159	108	260	88	263	86
500-630	125	193 135 161	1.388	129	260	99	263	86



Branch saddle topload outlet 160 - 225 mm

- PE 100 SDR 11 (ISO S5)
- 10 bar Gas
- Branch Saddle installation only with installation set Topload TL225 (799.300.807)
- Angle adaptors (799.350.340) for fusion cable required
- 4 mm pin connectors
- Limited path fusion indicators
- Spigot outlet for butt- and electrofusion
- Full pressure applicable - no derating factor

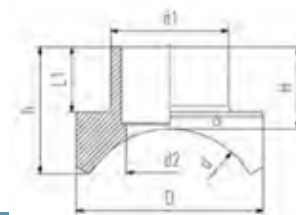
d [mm]	d1 [mm]	Code	Weight [kg]	h [mm]	H [mm]	L [mm]	L1 [mm]	B [mm]	d2 [mm]
315	160	193 135 402	2.662	212	137	322	110	282	131
315	225	193 135 404	4.594	306	160	366	127	260	184
355	160	193 135 412	2.662	206	137	322	110	282	131
355	225	193 135 414	4.710	319	160	366	127	249	184
400	160	193 135 422	2.678	198	137	322	110	300	131
400	225	193 135 424	4.700	329	160	366	127	241	184
450	160	193 135 432	2.678	194	137	322	110	300	131
450	225	193 135 434	4.700	329	160	366	127	233	184
500	160	193 135 442	2.708	186	137	322	110	310	131
500	225	193 135 444	4.650	344	160	366	127	226	184
560	160	193 135 452	2.708	183	137	322	110	310	131
560	225	193 135 454	4.650	344	160	366	127	220	184
630	160	193 135 462	2.500	177	137	322	110	312	131
630	225	193 135 464	4.630	353	160	366	127	214	184
710	160	193 135 472	2.500	172	137	322	110	312	131
710	225	193 135 474	4.630	352	160	366	127	208	184
800	160	193 135 482	2.500	168	137	322	110	312	131
800	225	193 135 484	4.610	359	160	366	127	203	184
900	225	193 135 494	4.610	359	160	366	127	199	184
1000	225	193 135 504	4.610	359	160	366	127	195	184



Branch saddle topload outlet 315 mm

- PE 100 SDR 11 (ISO S5)
- 10 bar Gas
- Branch saddle installation only with installation set Topload TL315 (799.350.808) or TL500 (799.300.809)
- Angle adaptors (799.350.340) for fusion cable required
- 4 mm pin connectors
- Protected wire without medium contact
- Spigot outlet for butt- and electrofusion
- Full pressure applicable - no derating factor

d [mm]	d1 [mm]	Code	Weight [kg]	h [mm]	H [mm]	L [mm]	L1 [mm]	D [mm]	d2 [mm]	SDR pipe
500	315	193 135 446	17.00	216	337	500	157	500	232	11-26
560	315	193 135 456	16.10	216	327	500	157	500	232	11-26
630	315	193 135 466	15.40	216	312	500	157	500	232	11-33
710	315	193 135 476	14.80	216	297	500	157	500	232	11-33
800	315	193 135 486	14.30	216	287	500	157	500	232	11-33
900	315	193 135 496	13.80	216	281	500	157	500	232	11-33
1000	315	193 135 506	13.50	216	274	500	157	500	232	11-33



Branch saddle topload outlet 315 - 500 mm

- PE 100 SDR 11 (ISO S5)
- 5 bar Gas
- Branch saddle installation only with installation set Topload TL500 (799.300.809)
- Angle adaptors (799.350.340) for fusion cable required
- 4 mm pin connectors
- Protected wire without medium contact
- Spigot outlet for butt- and electrofusion
- Full pressure applicable - no derating factor

d [mm]	d1 [mm]	Code	Weight [kg]	h [mm]	H [mm]	L [mm]	L1 [mm]	D [mm]	d2 [mm]	SDR pipe
710	315	193 135 676	14.000	174	266	500	157	500	250	11-33
800	315	193 135 686	13.500	174	261	500	157	500	250	11-33
900	315	193 135 696	13.100	174	251	500	157	500	250	11-33
900	500	193 135 698	32.600	237	406	700	219	700	397	11-33
1000	315	193 135 706	12.800	174	246	500	157	500	250	11-33
1000	500	193 135 708	31.400	237	396	700	219	700	397	11-33
1200	315	193 135 716	12.300	174	241	500	157	500	250	11-33
1200	500	193 135 718	29.400	237	378	700	219	700	397	11-33
1400	315	193 135 726	11.900	174	234	500	157	500	250	11-33
1400	500	193 135 728	28.100	237	363	700	219	700	397	11-33
1600	315	193 135 736	11.700	174	228	500	157	500	250	11-33
1600	500	193 135 738	27.100	237	352	700	219	700	397	11-33
2000	315	193 135 746	11.300	174	221	500	157	500	250	11-33
2000	500	193 135 748	25.700	237	337	700	219	700	397	11-33